



Monitor



Folded shaft



Optional rough terrain cart



Control unit and antenna



Easy Locator

Ground Penetrating Radar for Utility Locating

Introducing the Easy Locator from MALÅ; an easy to use, entry level Ground Penetrating Radar (GPR) system designed to meet your utility locating needs. The Easy Locator is the tool of choice for those who need to quickly and easily identify the presence of buried utility infrastructure, both metallic and non-metallic.

Modern advances in technology, particularly in the design and construction of buried utilities, have resulted in an ever increasing use of non-metallic materials.

Locate professionals know the difficulties associated with non-metallic utilities and that conventional locating tools leave you a few pieces short. So let the Easy Locator help you fill in the missing pieces.

GPR is the only technology available that does not require a physical connection to the utility, nor does it rely on radiating electromagnetic (EM) fields that may or may not be present or detectable.

Main Applications

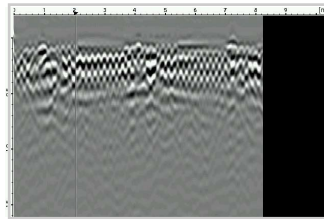
The Easy Locator caused a revolution when it was originally released and quickly established itself as the GPR tool of choice for utility applications, such as:

- Utility detection
- Utility marking
- Underground Storage Tank (UST) detection
- Void detection
- Locate service or illegal connections
- Lost cover, valve, cable box or vault detection
- And many more!

Specific Features

The product's simple yet ergonomic and field rugged design, intuitive user interface and clear display is testament to its success and it remains as the number one choice in its field.

- Minimal set up for fast start-up
- Quick and simple one button operation
- Real time locates
- Detects metallic and non-metallic utilities
- Back up cursor for quick and accurate utility marking
- 10.4" colour LCD screen
- Compact, portable and field rugged design – IP66
- Available in nine different languages (english, french, italian, spanish, german, swedish, norwegian, russian and chinese)



System Configuration

With fast start-up and minimal set-up the Easy Locator can be rapidly deployed and the user can be out collecting real-time data at full walking speed within minutes of arriving at the job site. MALÅ's unique single push/ turn button control allows for quick and simple operation. A clear easy to read color LCD combined with a back up cursor allows for easy interpretation of data and efficient on-site marking of utilities. An optional feature allows images of the screen data to be saved in jpeg format which can then be exported via a USB thumb drive for use in field reports. The hinged shaft design allows the Easy Locator to be folded, creating a more compact package for efficient transportation and storage.

Technical Specification

Power supply: Li-Ion 11,1V battery

Operating time: 5/ 10 h with single/ double battery pack

Operating temp: -20° to +50°C or 0° to 120 °F

Environmental: IP66

Display: 10.4" Color TFT Ultra-Hi-Brite or trans-reflective LCD

Dim. with wheels: 67x47x19cm/ 26"x19"x7"
(excluding handle)

Weight: 18 kg/ 40 lb (Shallow), 19 kg/ 42 lb (Mid)

Antennas:

Shallow: 500 MHz. Shallow penetration, highest resolution.

Mid: 350 MHz. Deeper penetration, high resolution.

See our webpage for latest information.

Head Office

MALÅ GeoScience AB
Skolgatan 11, SE-930 70
Malå Sweden
Phone: +46 953 345 50
Fax: +46 953 345 67
E-mail: sales@malags.com

Sales Offices

USA: MALÅ Geoscience USA, Inc., 2040 Savage Rd. Box 80430, Charleston, SC 29416
Phone: +1 843 852 5021, Fax: +1 843 769 7397, E-mail: sales.usa@malags.com

Malaysia: MALÅ GeoScience (Asia Pacific), 9G-B, Jalan Prima 9, Metro Prima, Kepong, 52100 Kuala Lumpur
Phone: +60 3 2300 1086, Fax: +60 3 2300 0956, E-mail: sales@malags.com